

Hampshire Water Transfer and Water Recycling Project Environmental Statement - Figure 8.46 Riparian mammal desk study

VOLUME NUMBER: 6

PLANNING INSPECTORATE SCHEME NUMBER: WA010002

APPLICATION DOCUMENT REFERENCE: 6.3

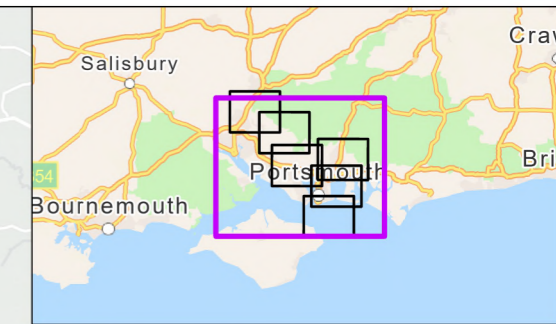
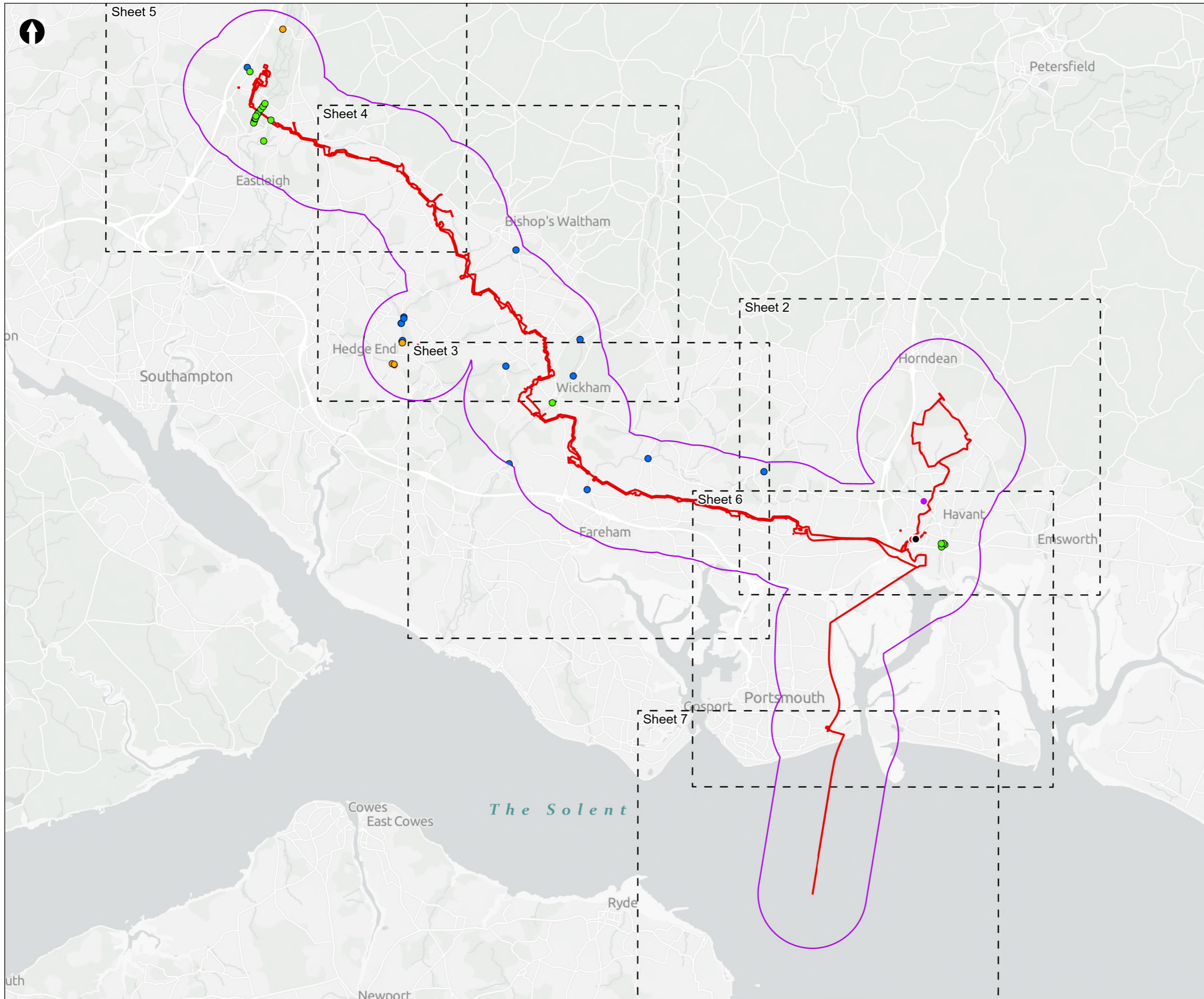
APFP REGULATION: 5(2)(a)

May 2026

Version 0



from
**Southern
Water** 



▭ Order Limits
▭ Desk Study Area
 Sheet Extent Boxes 1:40K

Notable and Protected Riparian Mammals

- Eurasian Otter
- European Water Vole

Non Native Invasive Species

- American Mink

SWECO Otter Survey Data (2024)

- Prints
- Spraints
- Resting Site

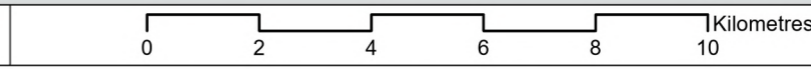
Coordinate system: British National Grid; Datum: OSGB 1936
 Data sources: © Crown copyright and database rights 2026 Ordnance Survey 0100031673. Sources: Esri, TomTom, Garmin, FAO, NOAA, USGS, © OpenStreetMap contributors, and the GIS User Community, Contains OS data © Crown Copyright and database right 2026. Contains data from OS Zoomstack

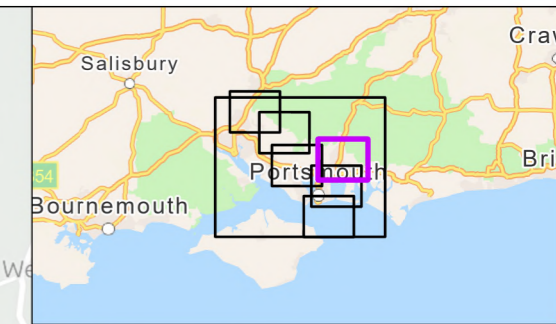
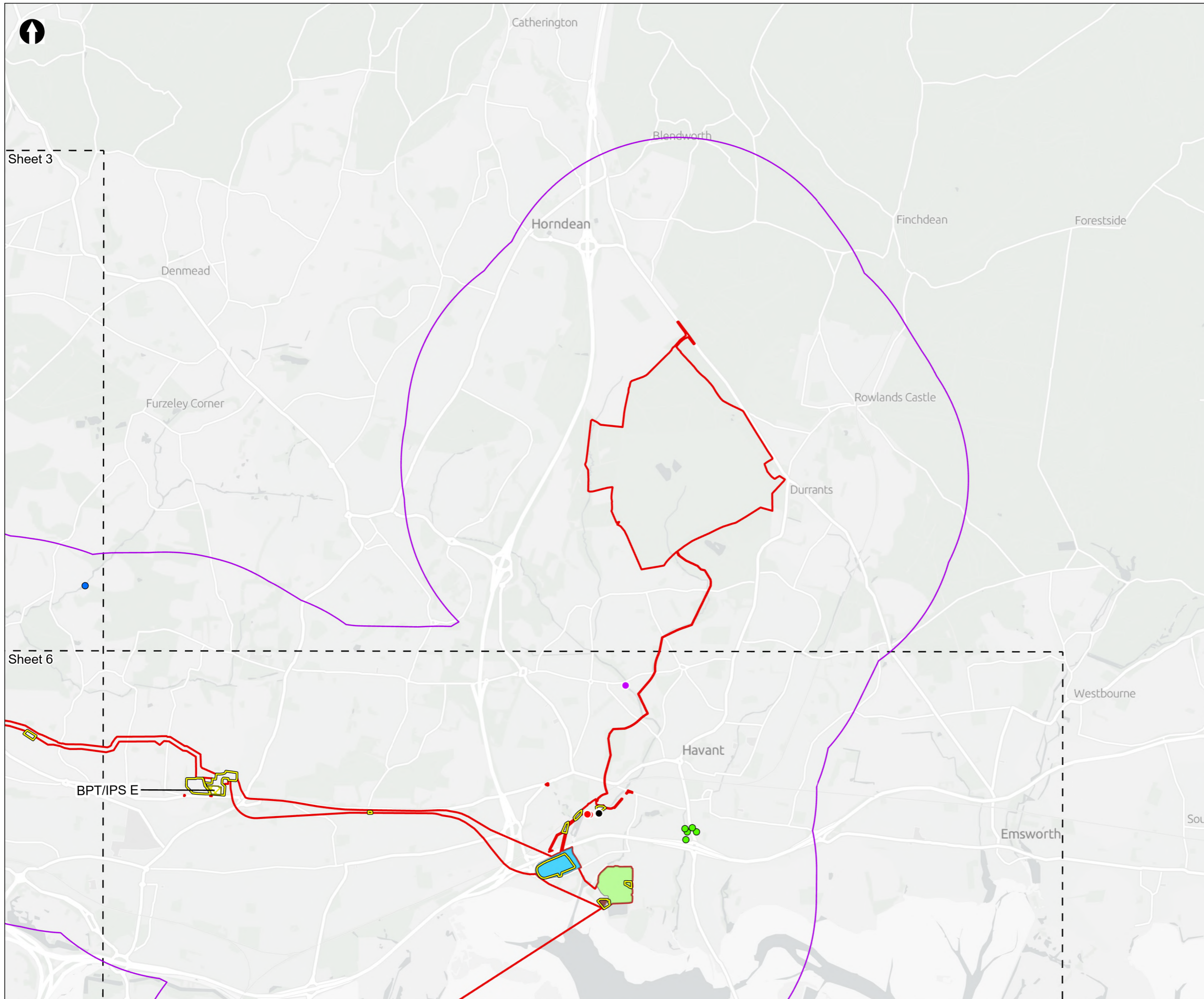
PROJECT TITLE
 Hampshire Water Transfer and Water Recycling Project



Figure 8.46
 Riparian mammal desk study
 Sheet 1 of 7

Drawn MW	GIS Checked DL	Checked MP	Approved AK
Scale at A3 1:135,000	Status Final	Revision 05	Security STD





Order Limits
 Order Limits

Desk Study Area
 Desk Study Area

Sheet Extent Boxes 1:40K
 Sheet Extent Boxes 1:40K

Construction compounds
 Construction compounds

Proposed Development components

- Budds Farm Wastewater Treatment Works
- Limits of Deviation for Budds Farm Pumping Station
- Water Recycling Plant site

Above Ground Plant

- Break Pressure Tank & Intermediate Pumping Station

Notable and Protected Riparian Mammals

- Eurasian Otter
- European Water Vole

SWECO Otter Survey Data (2024)

- Prints
- Spraints
- Resting Site

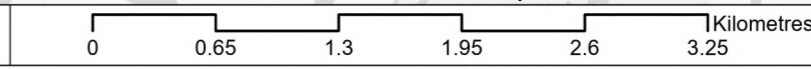
Coordinate system: British National Grid; Datum: OSGB 1936
 Data sources: © Crown copyright and database rights 2026 Ordnance Survey 0100031673. Sources: Esri, TomTom, Garmin, FAO, NOAA, USGS, © OpenStreetMap contributors, and the GIS User Community, Contains OS data © Crown Copyright and database right 2026. Contains data from OS Zoomstack

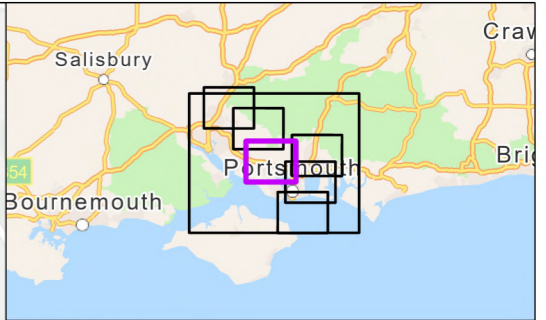
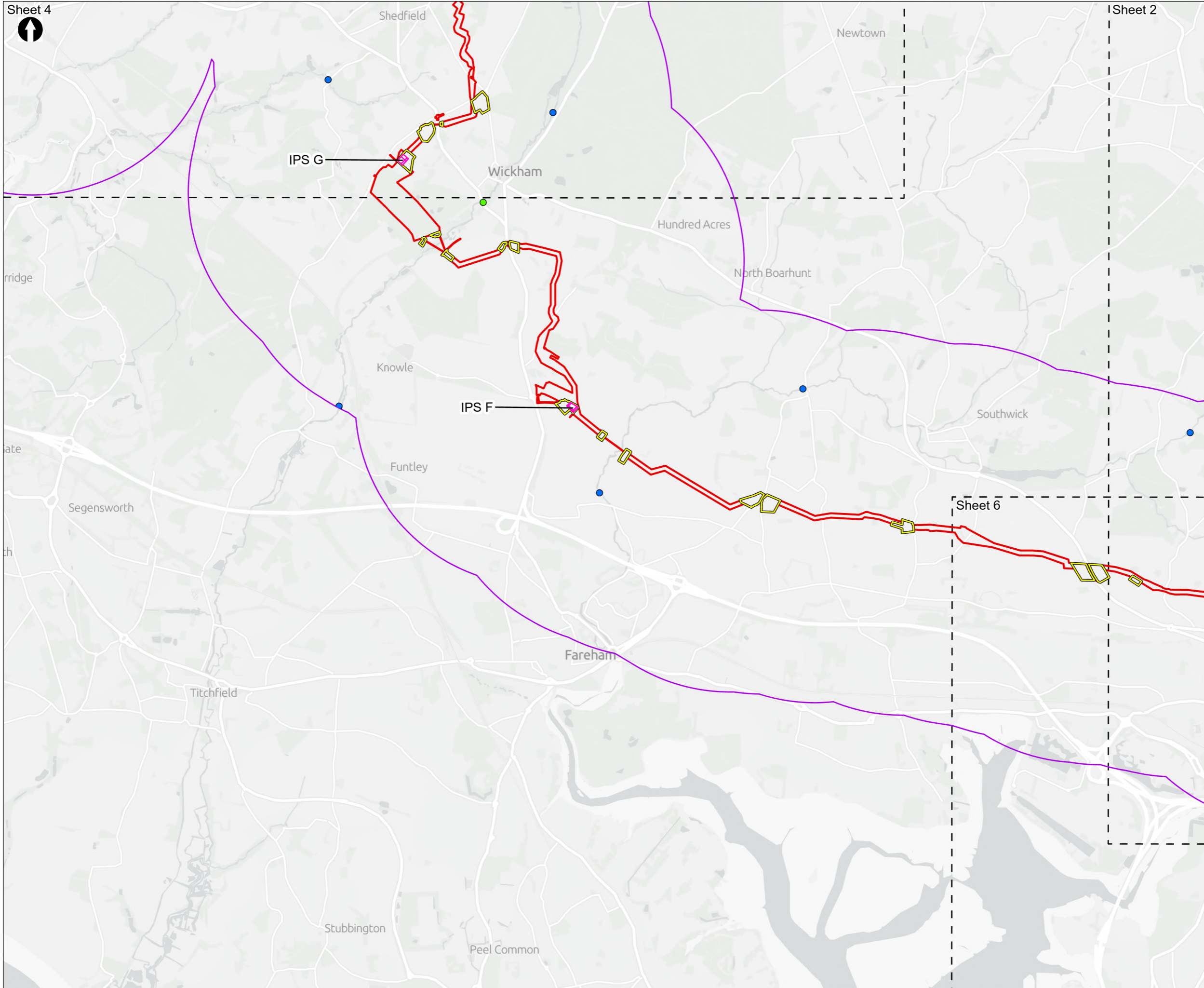
PROJECT TITLE
 Hampshire Water Transfer and Water Recycling Project



Figure 8.46
 Riparian mammal desk study
 Sheet 2 of 7

Drawn MW	GIS Checked DL	Checked MP	Approved AK
Scale at A3 1:40,000	Status Final	Revision 05	Security STD





- Order Limits
- Desk Study Area
- Sheet Extent Boxes 1:40K
- Construction compounds
- Above Ground Plant**
- Intermediate Pumping Station
- Notable and Protected Riparian Mammals**
- Eurasian Otter
- European Water Vole

Coordinate system: British National Grid; Datum: OSGB 1936
 Data sources: © Crown copyright and database rights 2026 Ordnance Survey 0100031673. Sources: Esri, TomTom, Garmin, FAO, NOAA, USGS, © OpenStreetMap contributors, and the GIS User Community, Contains OS data © Crown Copyright and database right 2026. Contains data from OS Zoomstack

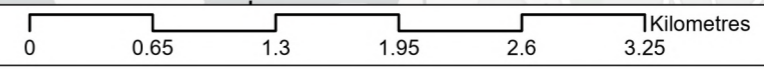
PROJECT TITLE
 Hampshire Water Transfer and Water Recycling Project

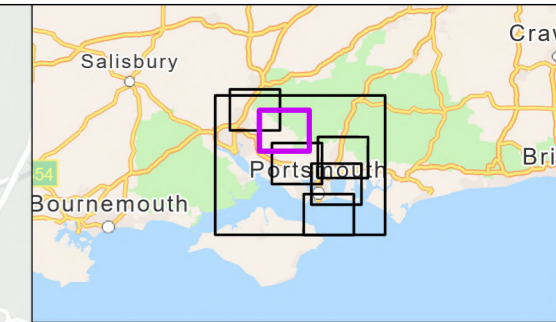
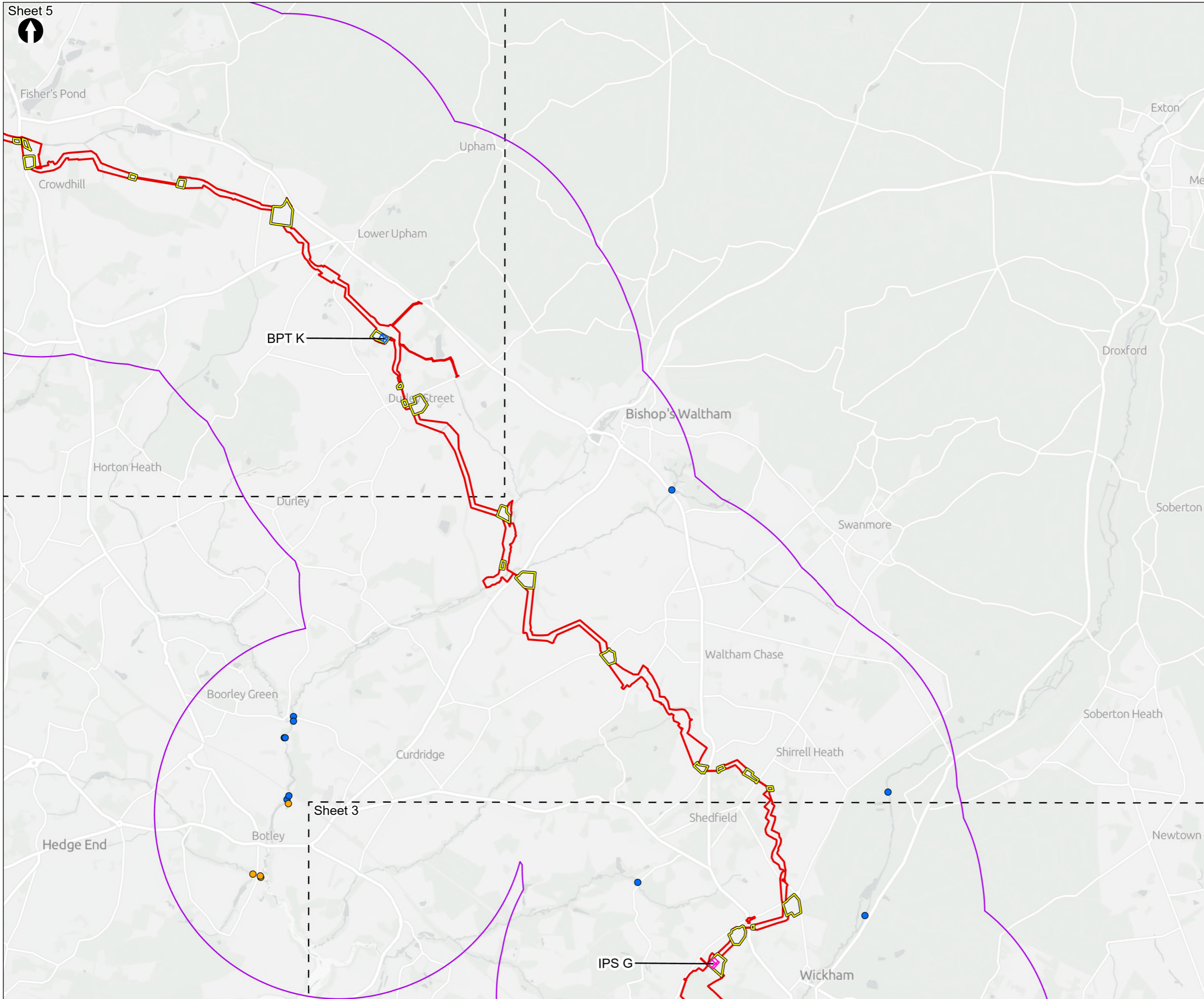


Figure 8.46
 Riparian mammal desk study
 Sheet 3 of 7

Drawn MW	GIS Checked DL	Checked MP	Approved AK
Scale at A3 1:40,000	Status Final	Revision 05	Security STD

Drawing Number
PC5223-RHD-ES-ZZ-D-Z-0070





Order Limits
 Order Limits

Desk Study Area
 Desk Study Area

Sheet Extent Boxes 1:40K
 Sheet Extent Boxes 1:40K

Construction compounds
 Construction compounds

Above Ground Plant

- X Break Pressure Tank
- X Intermediate Pumping Station

Notable and Protected Riparian Mammals

- Eurasian Otter

Non Native Invasive Species

- American Mink

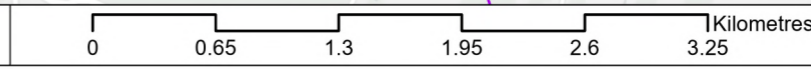
Coordinate system: British National Grid; Datum: OSGB 1936
 Data sources: © Crown copyright and database rights 2026 Ordnance Survey 0100031673. Sources: Esri, TomTom, Garmin, FAO, NOAA, USGS, © OpenStreetMap contributors, and the GIS User Community, Contains OS data © Crown Copyright and database right 2026. Contains data from OS Zoomstack

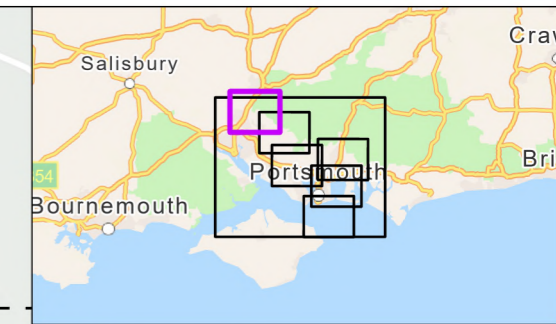
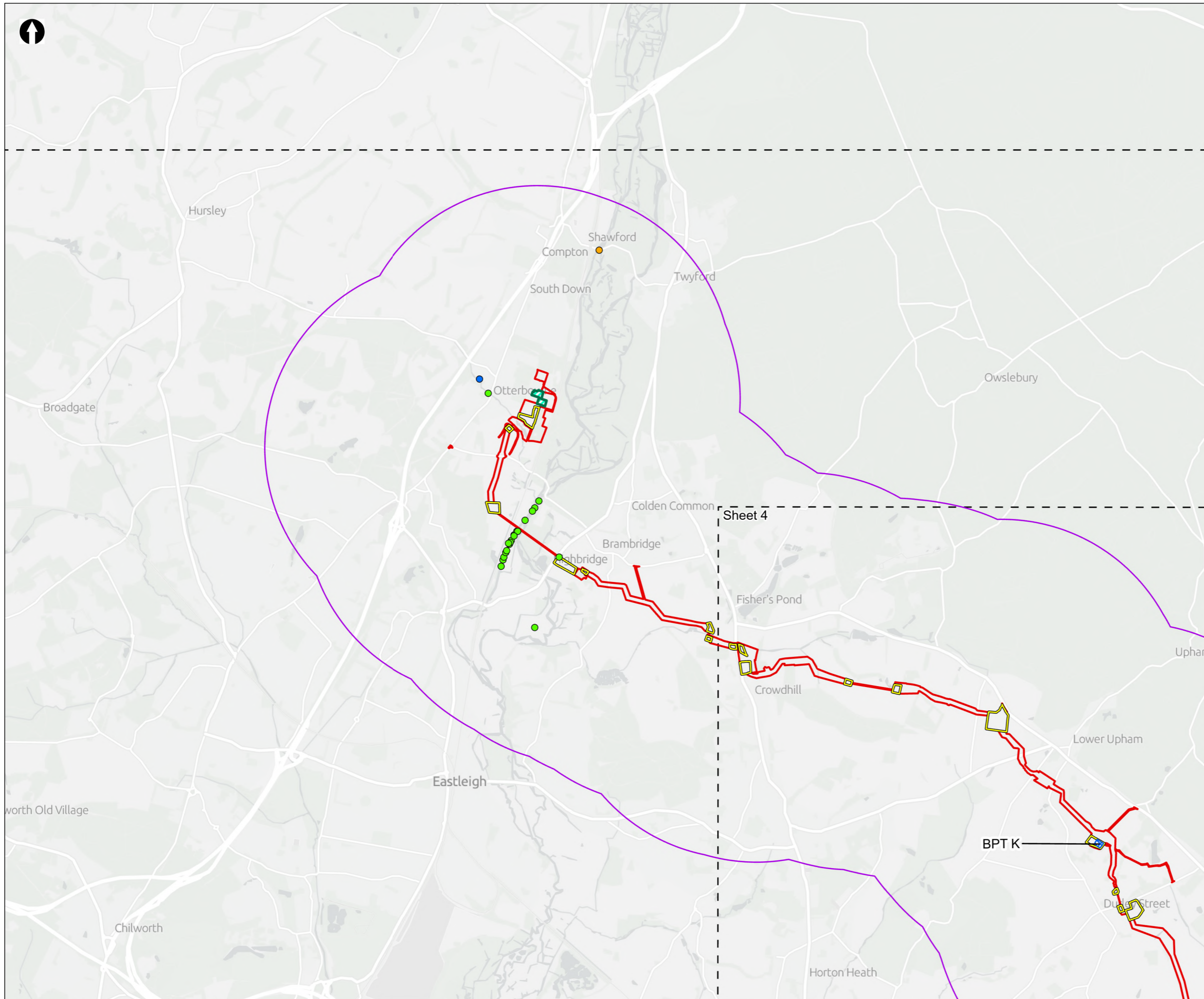
PROJECT TITLE
 Hampshire Water Transfer and Water Recycling Project



Figure 8.46
 Riparian mammal desk study
 Sheet 4 of 7

Drawn MW	GIS Checked DL	Checked MP	Approved AK
Scale at A3 1:40,000	Status Final	Revision 05	Security STD





Order Limits
 Desk Study Area
 Sheet Extent Boxes 1:40K
 Construction compounds
 Limits of Deviation for Otterbourne INNS Treatment Plant

Above Ground Plant
 Break Pressure Tank

Notable and Protected Riparian Mammals
 Eurasian Otter
 European Water Vole

Non Native Invasive Species
 American Mink

Coordinate system: British National Grid; Datum: OSGB 1936
 Data sources: © Crown copyright and database rights 2026 Ordnance Survey 0100031673. Sources: Esri, TomTom, Garmin, FAO, NOAA, USGS, © OpenStreetMap contributors, and the GIS User Community, Contains OS data © Crown Copyright and database right 2026. Contains data from OS Zoomstack

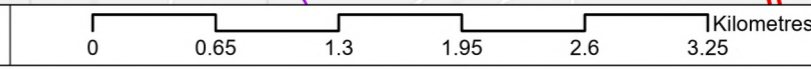
PROJECT TITLE
 Hampshire Water Transfer and Water Recycling Project

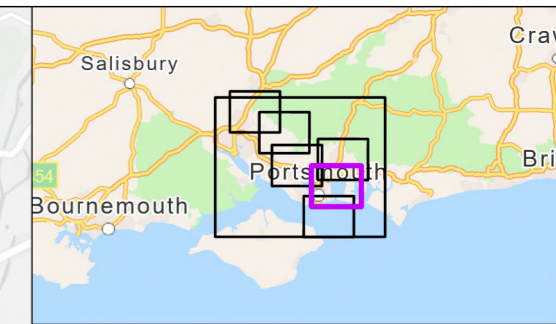
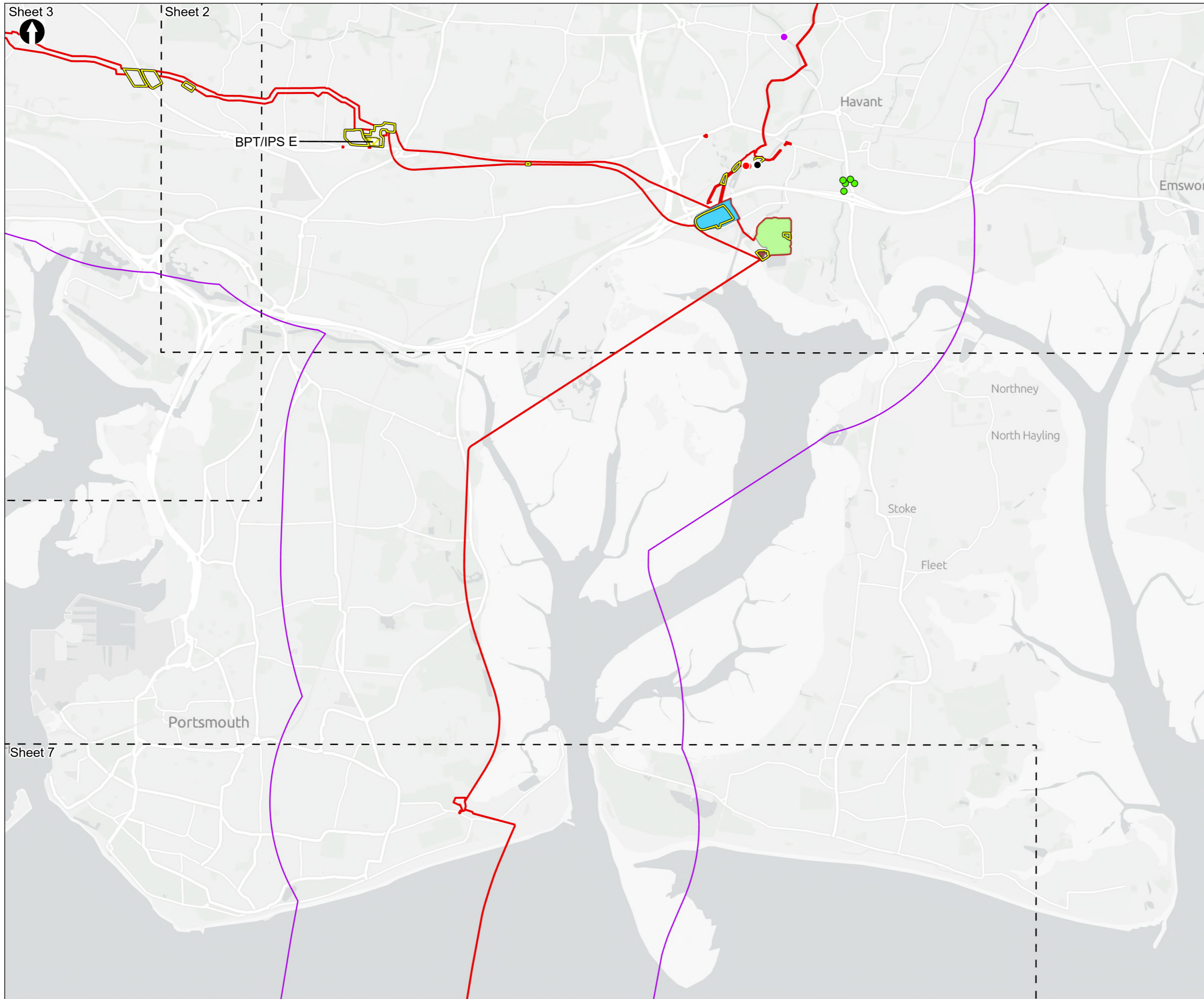


Figure 8.46
 Riparian mammal desk study
 Sheet 5 of 7

Drawn MW	GIS Checked DL	Checked MP	Approved AK
Scale at A3 1:40,000	Status Final	Revision 05	Security STD

Drawing Number
PC5223-RHD-ES-ZZ-D-Z-0070





- Order Limits
- Desk Study Area
- Sheet Extent Boxes 1:40K
- Construction compounds
- Proposed Development components**
- Budds Farm Wastewater Treatment Works
- Limits of Deviation for Budds Farm Pumping Station
- Water Recycling Plant site
- Above Ground Plant**
- Break Pressure Tank & Intermediate Pumping Station
- Notable and Protected Riparian Mammals**
- European Water Vole
- SWECO Otter Survey Data (2024)**
- Prints
- Spraints
- Resting Site

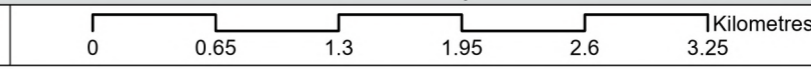
Coordinate system: British National Grid; Datum: OSGB 1936
 Data sources: © Crown copyright and database rights 2026 Ordnance Survey 0100031673. Sources: Esri, TomTom, Garmin, FAO, NOAA, USGS, © OpenStreetMap contributors, and the GIS User Community, Contains OS data © Crown Copyright and database right 2026. Contains data from OS Zoomstack

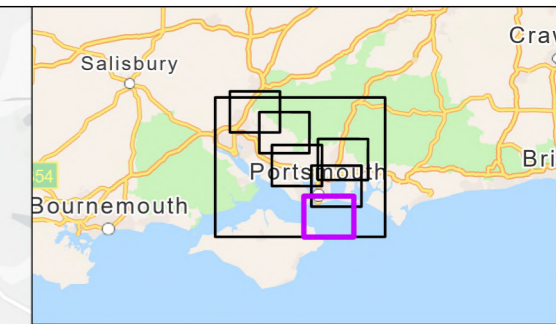
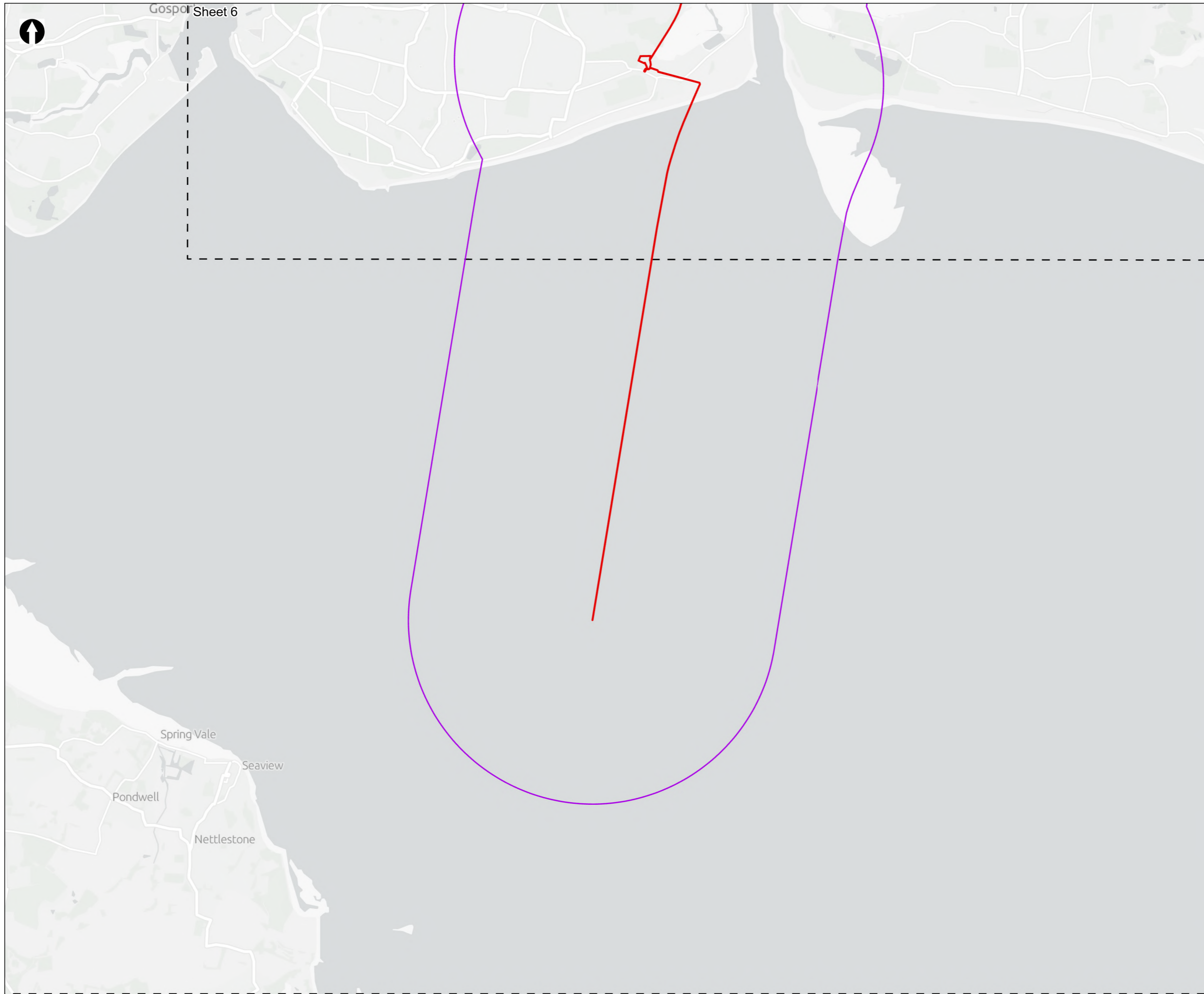
PROJECT TITLE
 Hampshire Water Transfer and Water Recycling Project



Figure 8.46
 Riparian mammal desk study
 Sheet 6 of 7

Drawn MW	GIS Checked DL	Checked MP	Approved AK
Scale at A3 1:40,000	Status Final	Revision 05	Security STD





Order Limits
 Desk Study Area
 Sheet Extent Boxes 1:40K

Coordinate system: British National Grid; Datum: OSGB 1936
 Data sources: © Crown copyright and database rights 2026 Ordnance Survey 0100031673. Sources: Esri, TomTom, Garmin, FAO, NOAA, USGS, © OpenStreetMap contributors, and the GIS User Community, Contains OS data © Crown Copyright and database right 2026. Contains data from OS Zoomstack

PROJECT TITLE
Hampshire Water Transfer and Water Recycling Project



Figure 8.46
 Riparian mammal desk study
 Sheet 7 of 7

Drawn MW	GIS Checked DL	Checked MP	Approved AK
Scale at A3 1:40,000	Status Final	Revision 05	Security STD

